

Drawing No. of customer:

Length 350. Protected by black insulated ripple pipe

Line Type: 22AWG

Line Type: 9AWG

Length 350. Protected by orange insulated ripple pipe

E view

Signal connector

D view

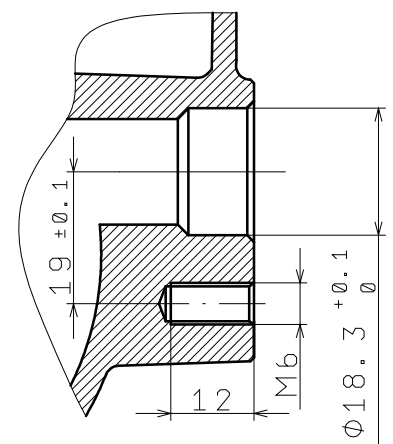
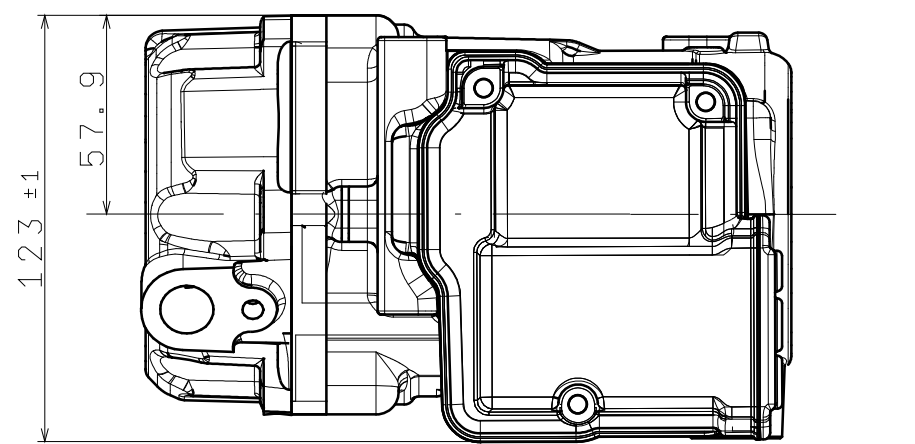
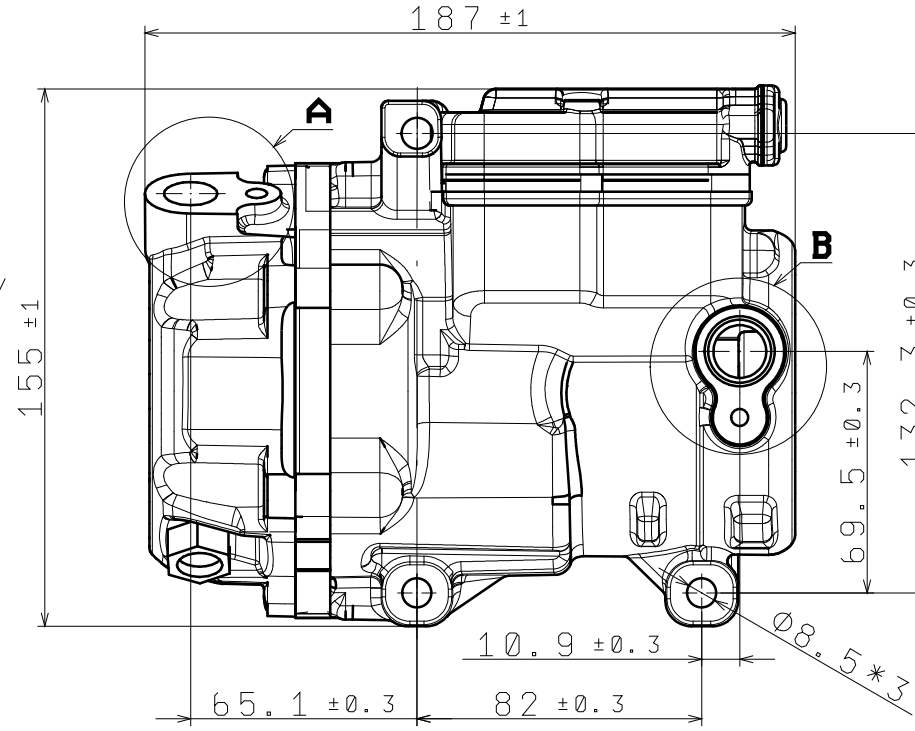
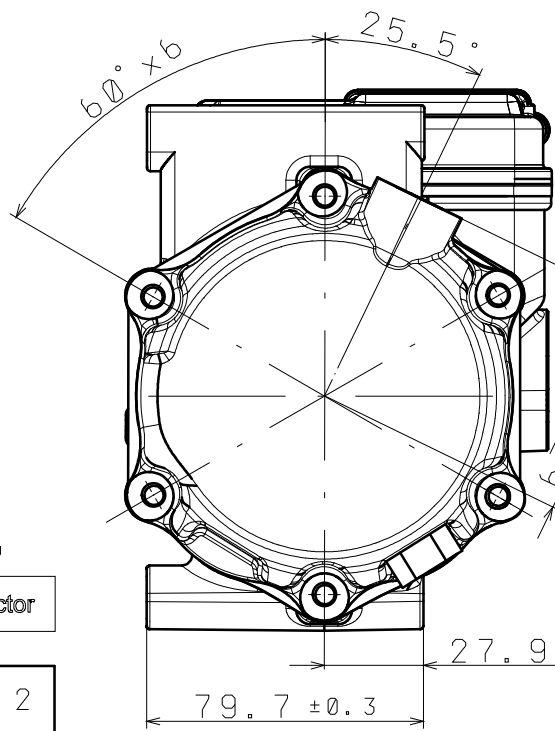
Power connector

1	2
---	---

6	4	2
5	3	1

Definition of external port

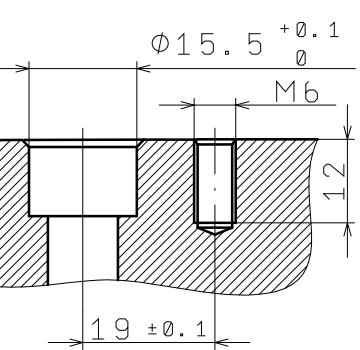
Part name	Item	Color	Definition of port	Name of Matching part
	1	Red	144V DC Positive pole input voltage 115V~173V DC	
	2	Black	144V DC Negative pole input	
	1	Red	12V DC Positive pole input	
	2	Black	12V DC Negative pole input	
	3	Yellow	STB-Compressor ON/OFF signal input, low level or hanger is off, high level is on, input electrical level range: high level 5-15V DC, 15mA; low level range 0-0.8V DC, 15mA	
	4	Green	PWM-IN Compressor speed adjustment signal input, signal type is 400Hz PWM Mark-Space Ratio signal, high level effective, input electric level range, high level 5-15V DC, 15mA; low level range 0-0.8V DC, 15mA. Speed adjustable range: 2000rpm-5000rpm, corresponding PWM Mark-space Ratio 5%-95% present lineal change. corresponding 2000rpm Mark-space Ratio is 5%, corresponding 5000rpm Mark-space Ratio is 95%	
	5	NC		
	6	NC		



Detail Area B(1:1)

Low pressure side 1.6MPa

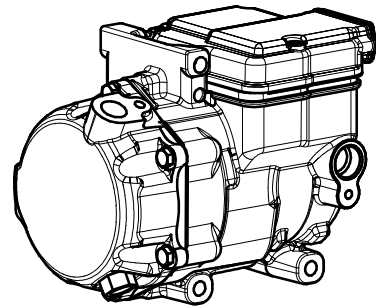
Detail Area A(1:1)



Information	
Displacement	18CC
Refrigerant	R134a
Refrigerant oil	RL68H/100ml
Voltage range	144V
Speed	2000~5000rpm
Size	187*123*155mm

Performance parameter				
Rpm	2000	3000	4000	5000
Cooling capacity(KW)	1.16	1.81	2.48	3.16
Consuming watt(KW)	0.46	0.67	0.88	1.13
COP(Avg)	2.52	2.70	2.79	2.79
Test condition	Ambient temperature 35°C, Suction temperature 17°C, Liquid temp. entering expansion valve 47°C, Condensation temperature 55°C, Evaporation 7°C.			

- Note:
- The total leakage of the compressor is not greater than 5g/year.
  - The noise is not greater than 76dB in rated speed.
  - Insulation resistance must be greater than 20MΩ.
  - The LOGO can be changed accord to the client request.
  - The tolerance of None remarked dimensions may be accordance with GB1804-m.
  - The performance of the compressor will be accordance with the GB/T 22068-2018 other than indicated already.



Equiaxial view

Remark	Number	Region	Doc. change No	Signature	Date
Designer			Standard		
Drawing			Audit		
Technology			Approved		

Customer:			
Phase remark	Mass	Scale	DWG.No. of customer:
B	4.8	1:2	DWG.NO.:
Pages:	1/1		Name of component: Compressor assemble of E-car air conditioning